

# GRAVOSTRAL™

The advantages of aluminium combined with those of a phenolic base

Surface colour	Core colour	Thickness	
		1.5 mm (1/16") *	3.0 mm (1/8") *
brushed gold	<b>black</b>	<b>18472</b>	<b>18482</b>
silver	<b>black</b>	<b>18471</b>	

\* References in green are double-sided

Note:

Black engraving.

One side gold and one side silver (Ref. 18472 & 18482), or silver on both sides (Ref. 18471).

- Aluminium surface on both sides.
- Black phenolic core, no paint filling required.
- Ideal for professional indoor signage.

## AVAILABLE SHEET SIZES



1220 x 605 mm  
48 x 23"

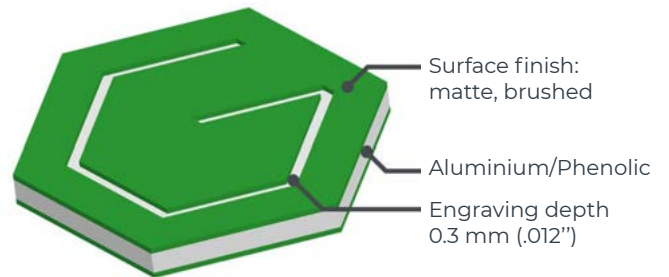


610 x 605 mm  
24 x 23"

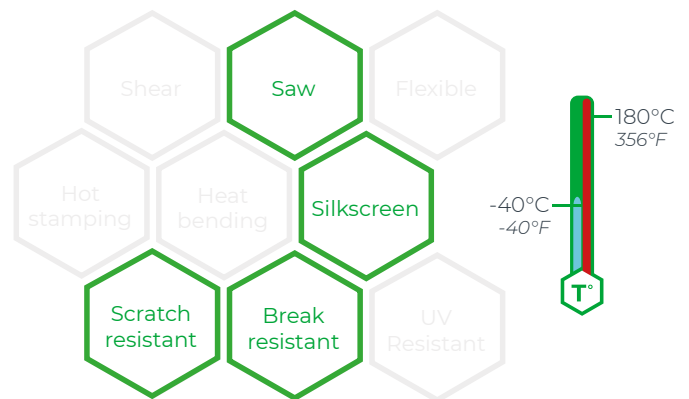


605 x 305 mm  
23 x 12"

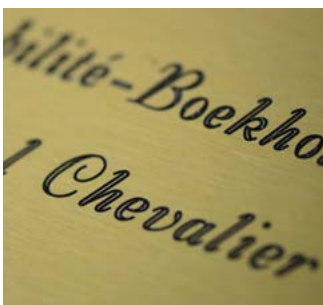
## MATERIAL SPECIFICITIES



## MATERIAL CAPABILITIES



## APPLICATIONS



Professional plaques



Identification plates



Signs for shops



Interior signage